

SOUTH ELEVATION

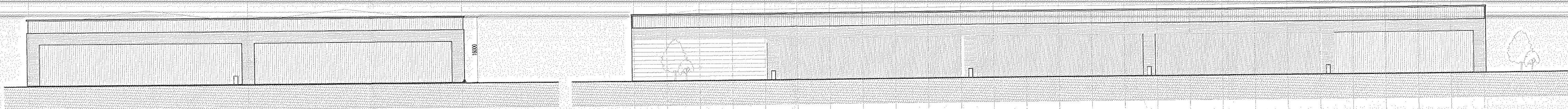
ALL DOCKS COMPRISE OF MODULAR CONCRETE SURROUND (PROWALL BY BULLIANTS)

PPC INSULATED SECTIONAL OVERHEAD DOORS

ALUMINIUM PPC WINDOWS

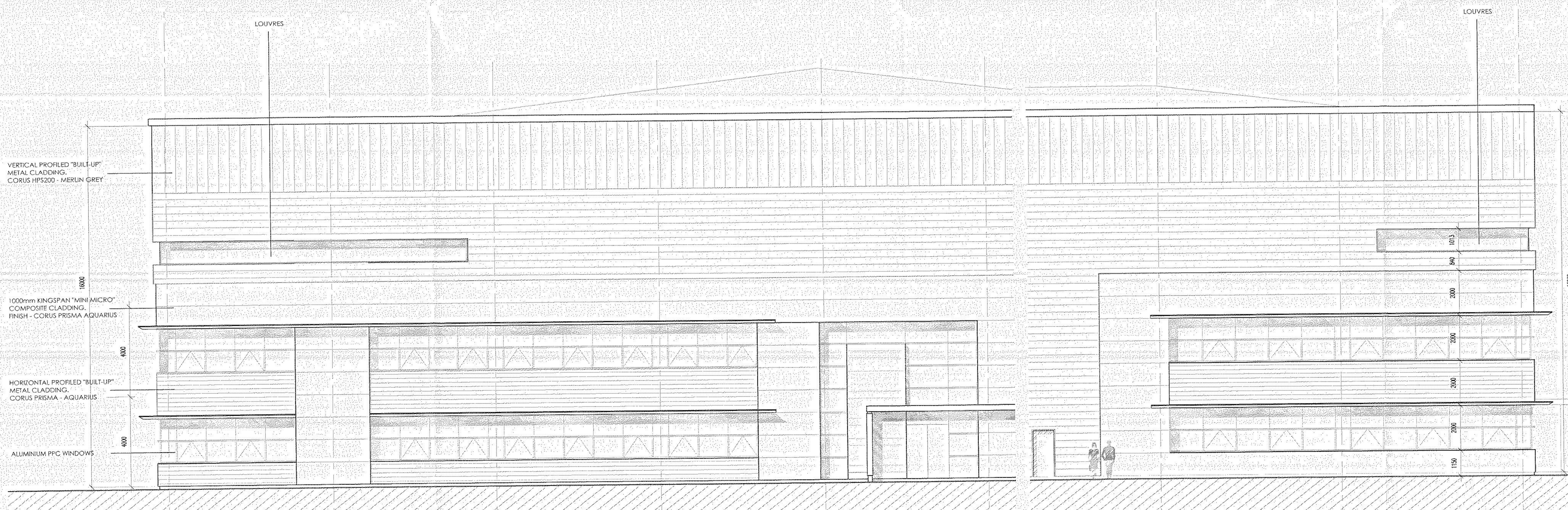
EAST ELEVATION

ALUMINIUM PPC DOORS



WEST ELEVATION

NORTH ELEVATION



OFFICE ELEVATION (EAST)

OFFICE ELEVATION (SOUTH)

STOCKTON BOROUGH COUNCIL
 PLANNING
 10 AUG 2007
 DATE RECEIVED

07/2407/1--

WYNYARD HS120
 UNIT C
 ELEVATION

PLANNING

A 15.05.07 DRAWING NOTE UPDATED FROM "PRELIMINARY" TO "PLANNING" AD

FletcherArchitects
 Designers & Master Planners

UNITS 1 & 2 RIVERSIDE MEWS
 COMMERCIAL STREET
 MANCHESTER M15 4RQ
 T +44(0)161 838 5360
 F +44(0)161 838 5361
 office@fletcherarchitects-uk.com
 www.fletcherarchitects-uk.com

PROPOSED COMMERCIAL DEVELOPMENT			
for WYNYARD			
UNIT C - ELEVATIONS			
STATUS	P	P = PRELIMINARY C = CONSTRUCTION	17.01.07
DRAWN:	SHP	CHECKED BY:	1/100/500@A1

UNIT C - ELEVATIONS
 WYNYARD HS120

SCALE 1:100/500@ A1

1562 - PL14 | A